

Jeopardy

PD	C&I	Discipline	Operations	Miscellaneous
<u>\$100</u>	<u>\$100</u>	<u>\$100</u>	<u>\$100</u>	<u>\$100</u>
<u>\$200</u>	<u>\$200</u>	<u>\$200</u>	<u>\$200</u>	<u>\$200</u>
<u>\$300</u>	<u>\$300</u>	<u>\$300</u>	<u>\$300</u>	<u>\$300</u>
<u>\$400</u>	<u>\$400</u>	<u>\$400</u>	<u>\$400</u>	<u>\$400</u>
<u>\$500</u>	<u>\$500</u>	<u>\$500</u>	<u>\$500</u>	<u>\$500</u>

Final Jeopardy

1 - \$100

- What does PLC stand for?
- Professional Learning Community



1 - \$200

- Name two types of meetings or workshops that you attend on a monthly basis.
- Faculty Meetings, Department Meetings, and/or PLCs (content-based, book clubs, or pedagogical).



1 - \$300

- Every five years, teachers are required to complete PD for 2 hours on this topic.

- Suicide Prevention



1 - \$400

- Name two professional development workshops offered by the **school** that you attended this year (not PLCs).
- Answers vary: questioning, assessment, DOLs & objectives, etc.



1 - \$500

- Name two of the three key points of our school-wide action plan.
- Classroom questioning, attendance & tardies for students, parental involvement



2 - \$100

- The Common Core has been replaced as the teaching standards in New Jersey by.....
- New Jersey Learning Standards and/or the Next Generation Science Standards



2 - \$200

- Where can you find the district's approved curriculum?
- District website:
- http://www.paterson.k12.nj.us/11_curriculum/curriculum.php



2 - \$300

- How and where do you get your data?
- From the district through Performance Matters and STAR Renaissance.



2 - \$400

- Aside from the basic portions of your lesson plans such as standards, objectives, and DOLs, name two other elements of your lesson plans.
- Differentiation, closure, procedure, etc.



2 - \$500

- Name two major parts of the I&RS process.
- Teacher Referral, plan of action, transition to Special Education, etc.



3 - \$100

- Name one person OTHER THAN THE SAC that you can notify of a possible drug or alcohol referral.
- Administrator or guidance counselor.



3 - \$200

- Where do you submit HIB incident reports?
- Online via HIBster.



3 - \$300

- Where can you find the school code of conduct?
- Handbook, school webpage, district homepage, etc.



3 - \$400

- Name one thing that any student who commits a weapons/firearms offense faces.
- Police, parents, and district security are notified.
- Discipline as per a category 3 offense.



3 - \$500

- Name the school's HIB Specialist and Affirmative Action Officer.
- HIB: Goffe or Davis
- AA: Vysotsky



4 - \$100

- Name two types of drills that schools are required to complete each month.

- Fire and Security



4 - \$200

- True or False. If you suspect child abuse or neglect, it is your responsibility to inform the CCPP (formerly DYFS).
- True; however, you can have the administrator call on your behalf.



4 - \$300

- If a student transfers to another school or class, how many days do you legally have to forward records?
- 10 days.



4 - \$400

- On a regular basis, representatives of this team are expected to meet and discuss key issues regarding HIB, discipline, safety and security, etc. HINT: It is no longer known as the School Safety Team (SST).
- Climate and Culture Team (CCT)



4 - \$500

- You agree to an order with a vendor without administrative approval. You have wrongly created a _____ Order. You will be responsible to pay for the cost of the order.
- Confirming Order



5 - \$100

- STEM has a “HSC”. What is that?
- Home School Council



5 - \$200

- Where can you obtain school supplies in STEM?
- Stock Room, Petretti Office, Main Office.
- DO NOT SAY: *We don't have anything..*



5 - \$300

- True or False: After the 11th day of absence, a student is guaranteed home instruction.
- False. Without medical documentation, a student cannot go on home instruction. In fact, at that point, the student can be dropped from roll.



5 - \$400

- What is the difference between vertical and horizontal articulation?
- Vertical: talking to grade level or similar course teachers above or below your grade/course.
- Horizontal: meeting amongst teachers who teach the same course or at the same grade level

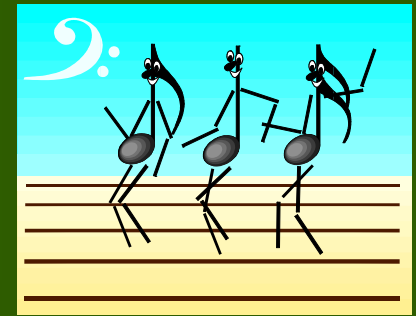


5 - \$500

- Aside from the monthly school security drills that take place, two evacuations per year are required of...
- School Buses



Final Jeopardy



- On what date were the Paterson Public Schools officially taken over by the state?

- August 7, 1991

